

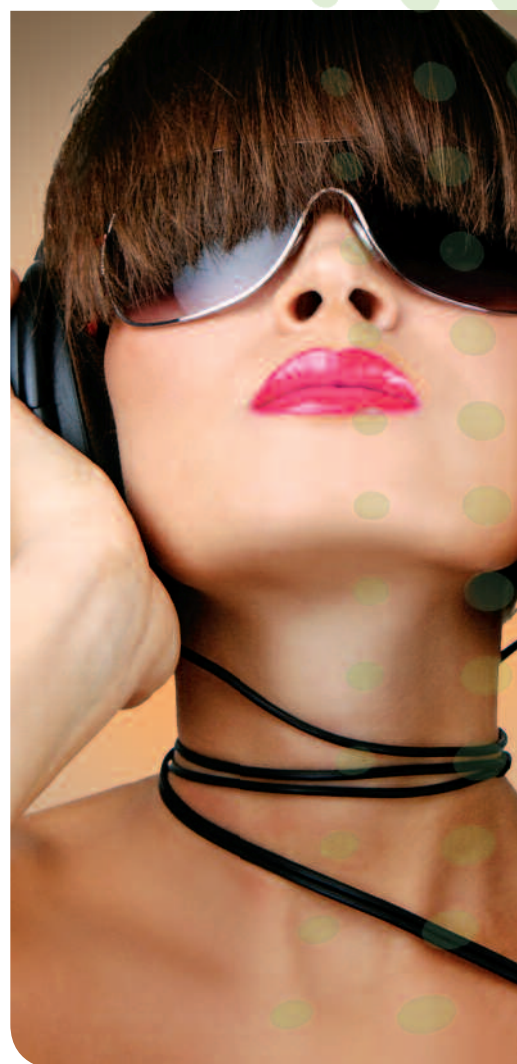
Truly A Masterpiece

Primula elatior PIANO Series

NEW!



Primula elatior PIANO Rose Bicolor



- Bred for fall or early spring production
Extreme uniformity and flowering across the entire series
- Plants remain compact, even under high heat
Allows growers to produce more high quality plants
- PIANO has large flowers and small leaves
Creating instant visual impact
- Earliest, most uniform series on the market
Ideal partner for Pansy sales in the fall

Biennial
Primula elatior



Blue



Fire



Orange



Red



Rose



Rose Bicolor







Violet



White



Yellow

			
7-9 mo	8-12" / 20-30 cm	Partial shade-shade	Raw

PIANO

Technical Information

Uses: Pots, combination planters, landscape plantings for fall and spring

Garden Height: 8" (20 cm)

Garden Width: 8-10" (20-25 cm)

Crop Time: Plug crop: 288 plugs 9-11 weeks, flowering pots for fall flowering 18-20 weeks, for early spring flowering 22-24 weeks

Available as: Raw seed

Sowing method: 1-2 seeds/Plug

Germination:

Stage I (7-14 days): Use a well drained media, pH 5.8-6.2, EC 0,5. Cover seed with a light cover of vermiculite. Light is not required for germination, but in germination chambers light (100-1000 Lux) improves germination and avoids stretching. Maintain temperature at 65 °F / 18 °C. Keep media moist to wet, relative humidity levels of 90-95% are optimal through day 8.

Plug Culture: *Stage II* (14 days): transfer plug trays to the greenhouse and get seedlings slowly used to light. Keep temperature at 59-63 °F / 16-17 °C, avoid temperatures above 65 °F / 18 °C as high temperatures cause very slow plant growth. Reduce moisture of media but don't let dry out. Lower humidity levels. *Stage III-IV* (35-50 days): Reduce temperature to 59-61 °F / 15-16 °C, in stage III begin light fertilization at 50-75 ppm nitrogen and in stage IV increase fertilization to 100-150 ppm nitrogen, pH 5.8-6.2, EC levels below 1.0.

Growing on: Transplant plugs after 9-11 weeks into 10-11 cm pots.

Media: Well drained soil with low salt level, EC below 1.0, pH 5.8-6.2

Light: Avoid direct sun to prevent leaf scorch.

Temperature: After potting 54-59 °F / 12-15 °C. Reduce temperature to 39-45 °F / 4-7 °C as soon as the plants have developed a good root system and 6-8 leaves. Overwintering frost free at 37-41 °F / 3-5 °C is possible, if plants have formed a good leaf rosette.

Fertilization: Moderate fertilization levels are required. Use a well-balanced calcium nitrate based formulation. Apply 100-150 ppm N as necessary to maintain an EC of 1.0. Later on use a fertilizer with N:K 1:1,5, as potassium deficiency causes leaf necrosis. At high nitrogen levels plants can become to leavy. Too high pH and too wet soil combined with low temperatures may cause iron deficiency. Apply chelated iron, if chlorosis becomes a problem.

Cultural hints: Grow dry during the later, cooler stages of production. Good ventilation, sufficient spacing and irrigation early in the morning help to avoid fungal diseases like Botrytis.

Advice:
The cultural recommendations are based on results from trials conducted under Central European conditions. Different conditions in other parts of the world may lead to deviations in results achieved.

Timing

Plug production 7-8 wks		
	Recommended date of transplanting	Sales
	Week (4" / 10,5 cm pot, 288 Plug)	Week
PIANO	29-33 > 36	39-43 > 2
Crescendo®	29-31	4-8



Primula elatior PIANO Rose Bicolor



Primula elatior PIANO Mix



Ernst Benary Samenzucht GmbH
Friedrich-Benary-Weg 1
34346 Hann. Münden, Deutschland
Phone: +49 (0) 5541 7009-0
Fax: +49 (0) 5541 7009-20
E-Mail: info@benary.de

www.benary.com

Ernst Benary of America, Inc.
2759 Wagner Court, Suite C
DeKalb, IL 60115-8609, USA
Phone: 815 756 4546
Fax: 815 756 9148
E-Mail: info@benary.com

 **Benary**
beautyinside®